

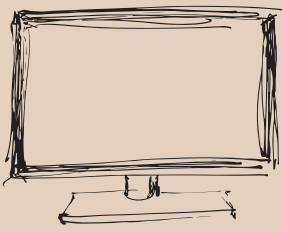
# Engagement

Some of the ways you can find out about longitudinal research

**Friends and family**



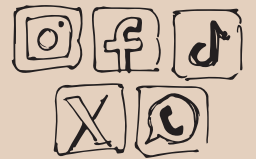
**TV**



**Charity newsletters**



**Social media**



**Phone apps**



**Hospitals and GPs**



**Faith groups**



**Community groups**



**Science festivals**



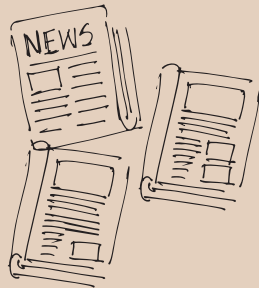
**Radio**



**Meetings**



**Newspapers and magazines**



**Schools, colleges and universities**



**Did you know?**

Researcher

Public

Public

Researcher